

ELVAL COLOUR



Power to imagine

A N O D I S E D

ATOM

Designing Excellence

a n o d i s e d

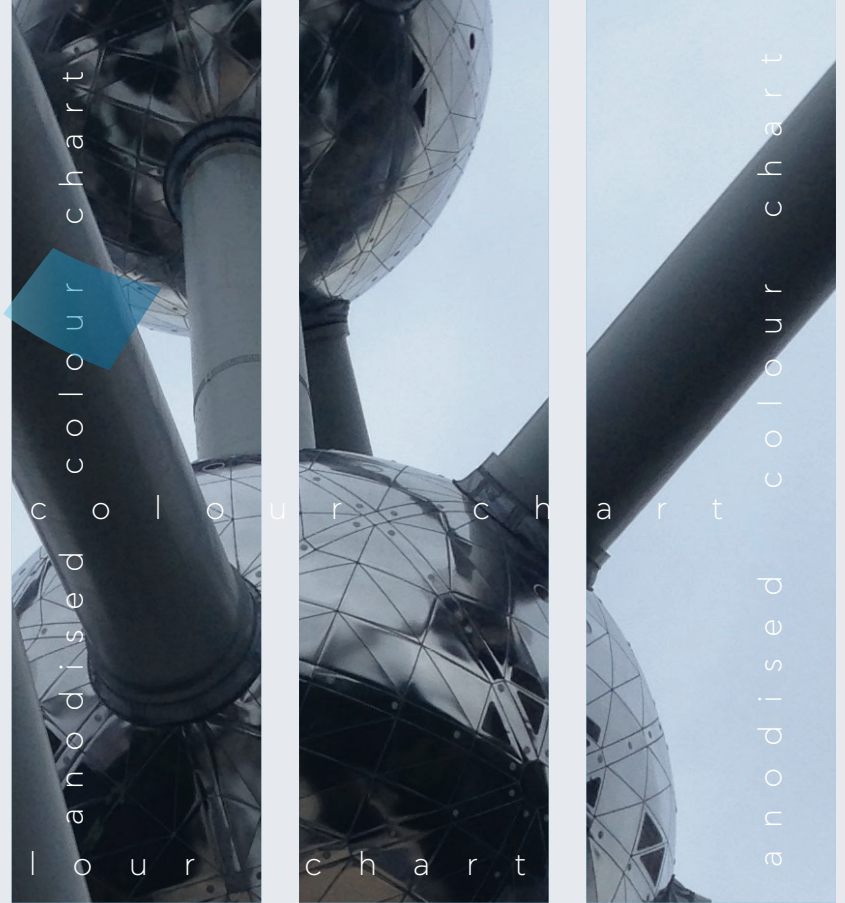
a n o d i s e d c o l o u r c h a r t

a n o d i s e d c o l o u r c h a r t

a n o d i s e d c o l o u r c h a r t

ATOM

a n o d i s e d c o l o u r c h a r t



ATOM Designing Excellence

Anodising is an electrolytic process that increases the thickness of the natural oxide layer of the aluminium. The excellent metallic appearance of the result improves durability and increases corrosion resistance.

ATOM, the new anodised collection by Elval Colour, combines a thin anodising layer coupled with high durability thin organic layer and provides a superb and luxurious aesthetic result.


ATOM, offers increased corrosion resistance, exceptional durability, easy fabrication, environmental friendliness. Low thickness anodised layer provides elasticity which reveals the unlimited bending capabilities with non visible creasing or cracking.

Our collection provides unlimited possibilities to the architects with its technical characteristics and with a real variety of brushed, bright and natural metal shades. With more than **40 years** of solid experience in aluminium coating and colour matching, **Elval Colour** can offer reliable added-value services by assisting in product selection and specification to best match the needs of the project or application you undertake. Customer focus dedication follows the product from concept to production and delivery.

Our specialised personnel will assist you in identifying and implementing the best possible colour shade option for your building. Cost, quality, aesthetics and speed of delivery will all be optimised with a view to maximise the performance, weathering resistance, and visual impact of your project.

For more information & guidelines, please contact:
www.elval-colour.com/en/contact

The presented anodised collection is based on metal chips, cut out from real aluminium coils. Therefore, they are well placed as reference optical shade samples. As with all anodising/coating procedures, there might be a small degree of colour variation from batch to batch. In order to ensure colour consistency, we recommend placing a project order in one batch. All anodised colours have to be installed following the arrow direction printed on the protective film and on the backside of the panel & coils in order to avoid colour variation. The enclosed shade collection is available in 1250mm standard width. For tailor made projects, special widths are available with a minimum quantity of 500m² per width and thickness.



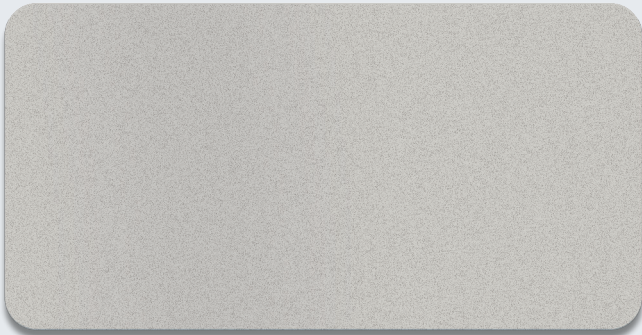
Anodised shades for unique façade creation



Copper Bright Brushed Anodised



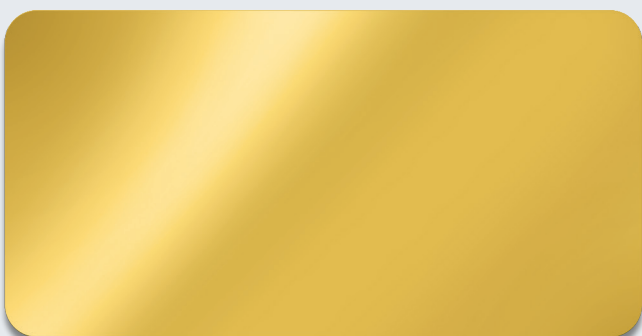
Bronze Bright Brushed Anodised



Scatter Gloss Anodised



Natural Bright Brushed Anodised



Gold Mirror Anodised



Gold Bright Brushed Anodised



Elval Colour

3rd Km Inofyta Peripheral Rd.

32011, Saint Thomas, Viotia, Greece

tel: +30 22620 53564, fax: +30 22620 53581

ecs@elval-colour.com

www.elval-colour.com

