

Garden

People. Forms. Swisspearl.

**SWISS
pearl®**

Just as a picture needs
the eye, to display its
true beauty nature
requires a beholder.



Heinrich Heine

On a radiant summer morning
I walk around in the garden.
The flowers whisper and speak,
But I wander silently.



04 – 25

Soft Line

06	Aladin	15	Quadra
07	Alto	17	Ronco
07	Biasca	17	Samurai
08	Bonsai	18	Sessanta-6
09	Delta	19	Spindel
10	Geisha	20	Sumo
11	Kyoto	21	Sushi
12	Kolonna	22	Tokyo
13	Lausanne	23	Trenta-3
13	Osaka	24	Twista
14	Plantship	25	Wave

26 – 31

Urban Gardening

28	Balconia	30	Stelz
29	Das Hochbeet	31	Squareline
30	Delta		

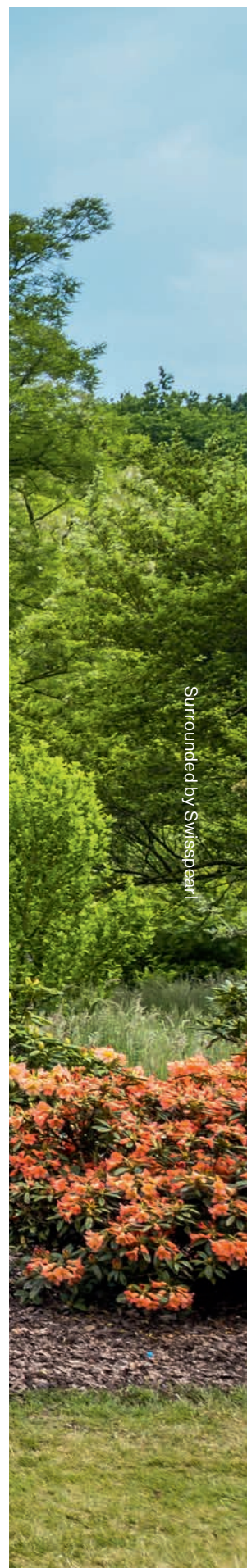
32 – 38

Custom Line

39 – 46

Extras

39	Custom Color	44	Gardening Tips
40	The New Colors	46	Production
42	The Material		



Surrounded by Swisspearl

SOFT LINE

A mere glance at the clear
lines furnishes an insight
into the quintessential.

SOFT LINE



Soft Line.

Unique objects for the garden living area.

Multifaceted aesthetics and practical functionality mean that Eternit plant containers offer an equally powerful impact, whether as a single object, or a perfectly coordinated ensemble. Leading designers have created freedom for an individual plant world and thus the exquisite configuration of our surroundings.

**SOFTLINE | ALADIN**

An ideal curvature fitted with a water overflow and reservoir, and entirely powder coated. With these first class features, the designer, Patrick Schöni, has placed an emphasis on durability.

Dimensions per element

Ø 112 x H 59 cm

Ø 138 x H 73 cm

Ø 165 x H 87 cm



SOFTLINE | ALTO

Timeless beauty, functionality and weather-resistant outdoor design as a focal point of garden composition. Tailored for an expression of stylishness and individuality by Michel Bruggmann.

Dimensions per element

Ø 39/26 x H 55 cm

Ø 42/26 x H 65 cm

Ø 45/26 x H 75 cm



SOFTLINE | BIASCA

Garden and object design from Willy Guhl, which in Switzerland is fondly called an "elephant's ear". In this container, cacti, succulents and colourful diversity exude a special flair.

Dimensions per element

93 x 93 x H 32 cm

SOFTLINE | **BONSAI**

„To plant a garden is to believe in tomorrow
(Audrey Hepburn).“ Bonsai brings stylish,
optical variety to both house and garden.

Dimensions per element

Ø 112 x H 40 cm

Ø 138 x H 50 cm

Ø 165 x H 60 cm





SOFTLINE | **DELTA**

Rectangular. Square. Round. Delta comes in numerous shapes and sizes that match every individual situation.

Dimensions per element

80 x 30 x 35 cm	DELTA 35
100 x 30 x 35 cm	

45 x 45 x 45 cm	DELTA 45
60 x 60 x 45 cm	
80 x 80 x 45 cm	
100 x 100 x 45 cm	
Ø 50 x H 45 cm	
Ø 75 x H 45 cm	
Ø 100 x H 45 cm	
60 x 45 x 45 cm	
80 x 45 x 45 cm	
100 x 45 x 45 cm	
120 x 45 x 45 cm	
140 x 45 x 45 cm	

80 x 55 x 60 cm	DELTA 60
100 x 55 x 60 cm	
120 x 55 x 60 cm	
140 x 55 x 60 cm	
60 x 60 x 60 cm	
80 x 80 x 60 cm	
100 x 100 x 60 cm	
Ø 75 x H 60 cm	



SOFTLINE | **GEISHA**

Character, charisma and relived recollections.
Geisha means the awakening of garden chic
by dreams.

Dimensions per element

Ø 44 x H 65 cm





Kyoto / Design: Michel Bruggmann



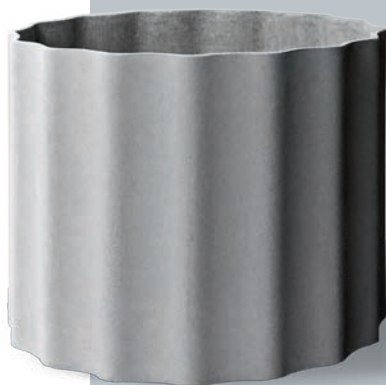
SOFTLINE | **KYOTO**

Inspired objects create colourful, animated images. Kyoto in an arrangement for genuine harmony.

Dimensions per element

Ø 35 x H 36 cm	KYOTO
Ø 44 x H 45 cm	
Ø 53 x H 55 cm	
Ø 70 x H 54 cm	
Ø 90 x H 70 cm	
Ø 120 x H 90 cm	

Ø 44 x H 36 cm	KYOTO LOW
Ø 53 x H 40 cm	
Ø 70 x H 45 cm	
Ø 90 x H 50 cm	
Ø 120 x H 65 cm	



SOFTLINE | KOLONNA

Simple elegance, inspired by classical antiquity, results in a classic of tomorrow. The rectilinear design permits a wealth of combinations.

Dimensions per element

Ø 60 x H 50 cm

Ø 60 x H 60 cm

Ø 80 x H 70 cm



SOFT LINE





SOFTLINE | LAUSANNE

Elemental and durable. Like all fibre cement objects from Swisspearl. With Lausanne, immersion in an enchanted garden world becomes reality.

Dimensions per element

Ø 70 x H 23 cm

Ø 90 x H 30 cm

SOFTLINE | OSAKA

Room for interpretations. Frost-resistant elements shelter herbs and flowers, which set the scene for growth and spontaneity.

Dimensions per element

35 x 35 x 36 cm

OSAKA

44 x 44 x 45 cm

53 x 53 x 55 cm

70 x 70 x 54 cm

90 x 90 x 70 cm

106 x 36 x 36 cm

OSAKA 106

44 x 44 x 36 cm

OSAKA LOW

53 x 53 x 40 cm

70 x 70 x 45 cm

90 x 90 x 50 cm

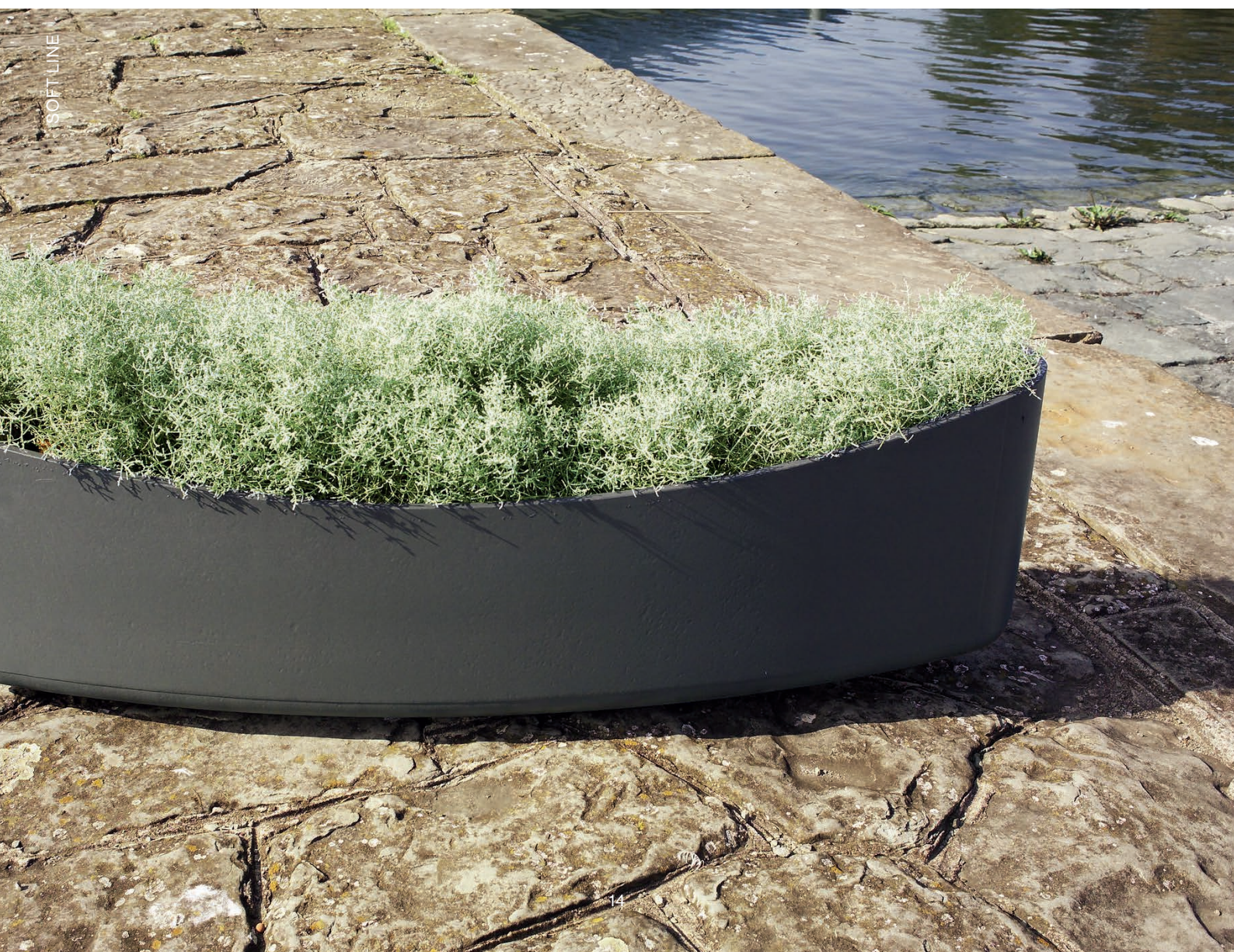


SOFTLINE | **PLANTSHIP**

Plantship's name reflects its nautical heredity.
The form is reminiscent of a boat and offers nearly
as much space for a diversity of plant species.

Dimensions per element

142 x 40 x 40/32 cm





SOFTLINE | **QUADRA**

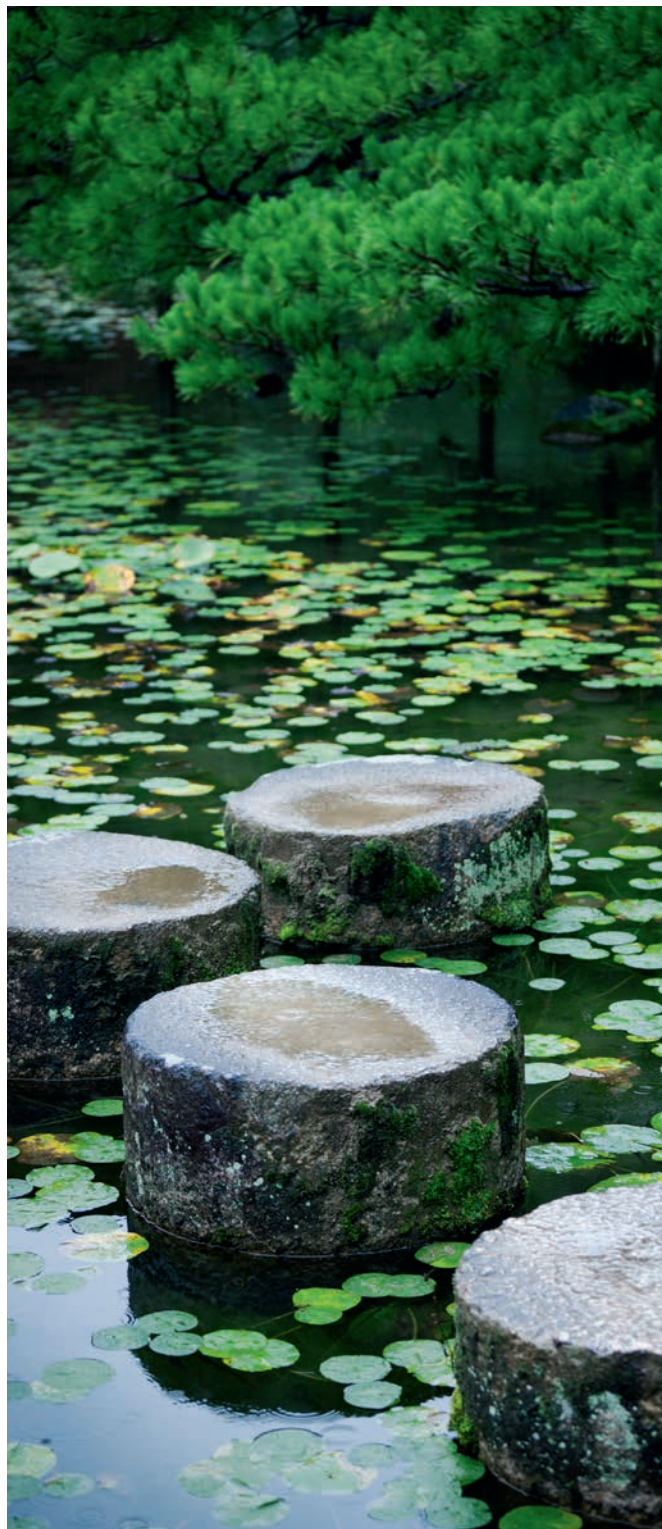
Higher and higher. Quadra is perfect for large plants and ivy vines, which en route to the sun soak up a great deal of energy.

Dimensions per element

34 x 34 x 55 cm

36 x 36 x 65 cm

38 x 38 x 75 cm



SOFT LINE



SOFT LINE





SOFTLINE | **RONCO**

Novel and splendid. When the sun sends down its first spring rays from above, the path to fresh impulses opens.

Dimensions per element

Ø 57,2 x H 44 cm (small)

Ø 70,2 x H 54 cm (large)

Ø 142,9 x H 110 cm (x-tra on request)



SOFT LINE

SOFTLINE | **SAMURAI**

Not a sword, but nonetheless capable of lending its surroundings a cutting edge. Looks delightful when planted...

Dimensions per element

44 x 44 x 65 cm



SOFTLINE | **SESSANTA-6**

Slim and versatile. Sessanta-6 lends gardens and terraces the necessary flexibility and vistas, while gently delineating certain areas and looking delightful.

Dimensions per element

66 x 33 x H 66 cm



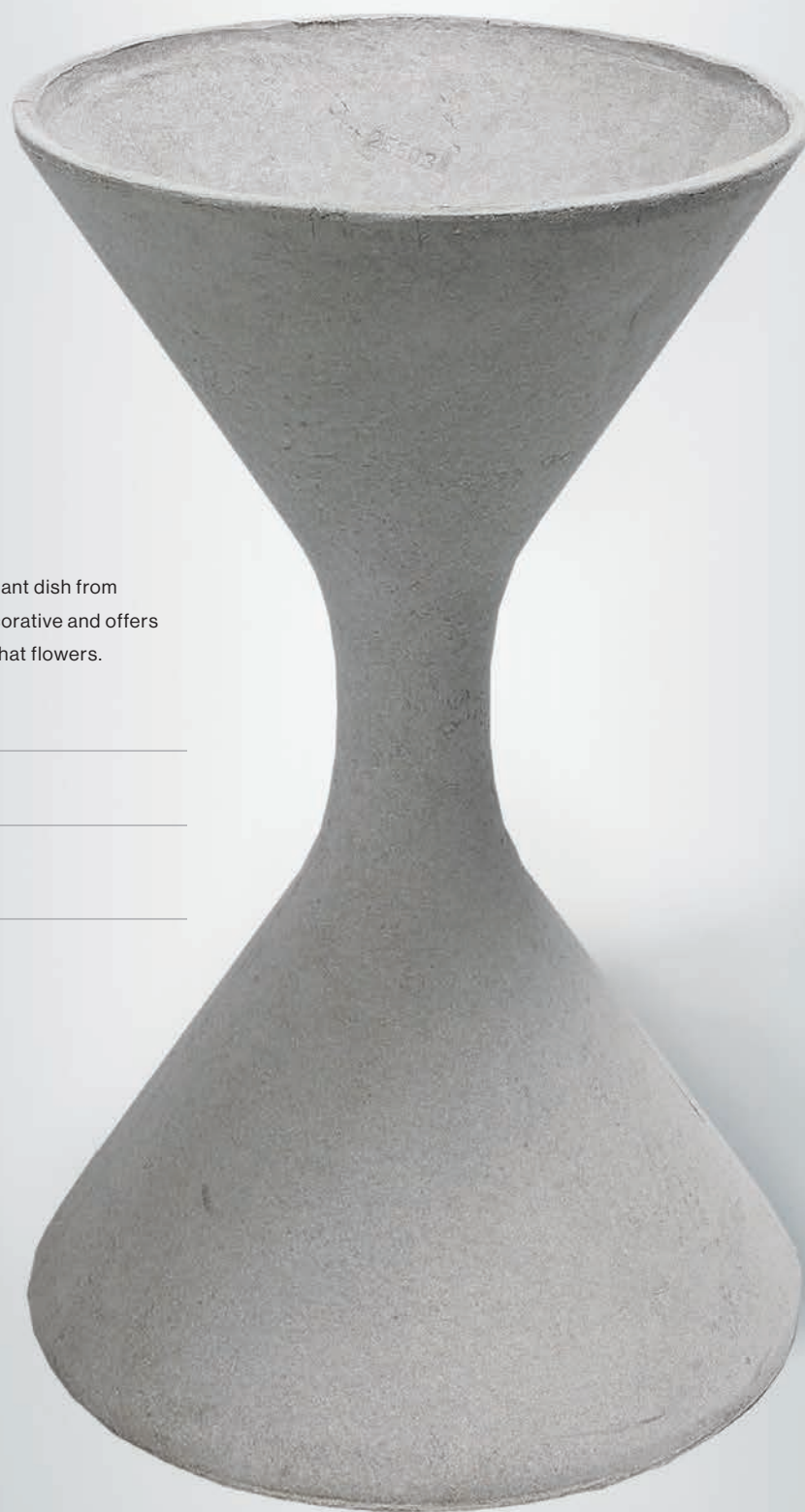
SOFTLINE | SPINDEL

Extravagant and shapely. This plant dish from designer Willy Guhl is highly decorative and offers adequate space for everything that flowers.

Dimensions per element

Ø 37 x H 60 cm

Ø 56 x H 92 cm



Spindel / Design: Willy Guhl



SOFTLINE | **SUMO**

Sumo is striking. And wildly expressive.

The voluptuous shape fosters curves that delight the eye. The design is from Sternform.

Dimensions per element

Ø 35 x H 40 cm

Ø 45 x H 50 cm





SOFT LINE

SOFTLINE | **SUSHI**

The Sushi plant trays guide the eyes of the viewer to a very special floral magic, which lends the robust container even greater animation.

Dimensions per element

Ø 50 x H 50 cm

Ø 65 x H 65 cm





Tokyo & Sushi / Design: Michel Bruggmann / Sternform



SOFTLINE | TOKYO

Individual. Convincing. The design shows how low plant containers can make a very special impression. Available in special shapes.

Dimensions per element

44 x 44 x H 45 cm

53 x 53 x H 55 cm

70 x 70 x H 40 cm



SOFTLINE | **TRENTA-3**

1, 2, 30... one never has enough of Trenta-3. Timeless, classic with a perfect layer structure and protection against the cold for lasting floral splendour.

Dimensions per element

33 x 33 x H 66 cm

SOFT LINE



SOFTLINE | TWISTA

Imaginative power creates highlights. A winner of the Red Dot design award, Twista is a candidate for the most attractive terraces and indoor areas.

Dimensions per element

60 x 30 x 60 cm

60 x 60 x 60 cm





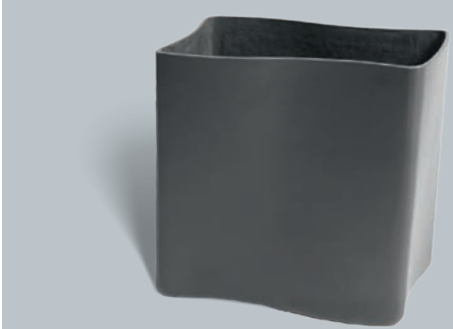
Wave / Design: Fries & Zumbühl

SOFTLINE | **WAVE**

An intuitive sense of a wave represented the primary aim the designers. The wave as a hallmark for growth and a love of nature.

Dimensions per element

57 x 34 x H 57 cm



URBAN GARDENING

Contentment is a quiet garden in which one can find rest.



Urban Gardening. For those that love nature.

Humans and nature belong together. Therefore, since time immemorial planting and gardening have raised our spirits. Sprouting shoots and growth, and the feeling of wellbeing emanating from being surrounded by splendid flowers, are food for the senses and open up our inner self to fragrances, emotions and understanding.



URBAN GARDENING | **BALCONIA**

Enduring elegance. Beauty that never changes, withstands frost and gives flowers and herbs a new home. You will never wish to be without Balconia.

Dimensions per element

40 x 17 x 17 cm	BALCONIA
60 x 17 x 17 cm	
80 x 17 x 17 cm	
100 x 17 x 17 cm	

40 x 17 x 17 cm	BALCONIA DECOR
60 x 17 x 17 cm	
80 x 17 x 17 cm	
100 x 17 x 17 cm	

60 x 17 x 20 cm	BALCONIA RÉSERVOIR
-----------------	---------------------------

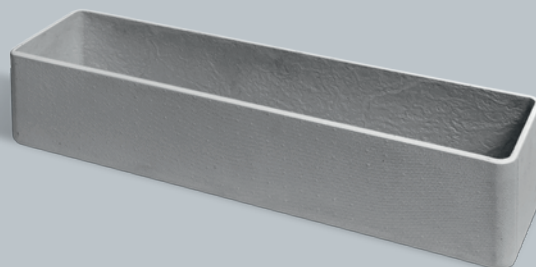


URBAN GARDENING | **DAS HOCHBEET**

Aesthetics on wheels. The raised-bed is quite simply a part of the modern gardener's repertoire. Because the art of gardening enhances our surroundings and everything edible is a delight to the palate.

Dimensions per element

110 x 65 x H 89 cm



URBAN GARDENING | DELTA

Plant-friendliness. Well guarded against frost; flowers and vegetables flourish particularly well in Delta's longitudinal design.

Dimensions per element

80 x 25 x 25 cm	DELTA 25
100 x 25 x 25 cm	
Ø 50 x H 25 cm	DELTA 25

URBAN GARDENING | STELZ

Standing tall and proud. The cultivated Stelz plant shelving is perfect for a green zone in the smallest of spaces. Moreover, depending upon the room available, it can also be used either horizontally or vertically as a raised-bed for small vegetables.

Dimensions per element

Horizontal 180 x H 60 cm
Vertical 60 x H 180 cm



URBAN GARDENING | **SQUARELINE**

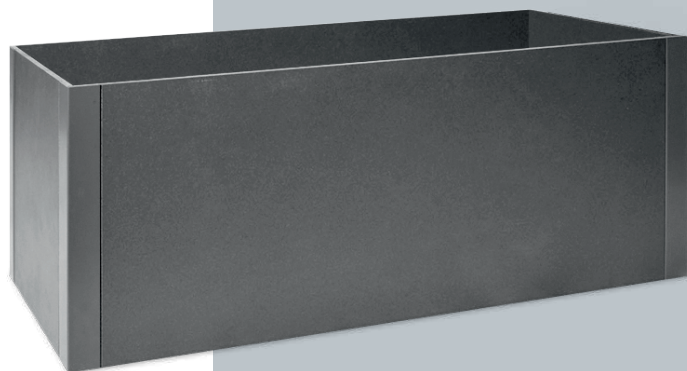
Total design. For any area and attractive natural quotations. Fitted with a water reservoir and overflow.

Dimensions per element

80 x 45 x 45 cm	SQUARELINE CARAT
100 x 45 x 45 cm	
60 x 60 x 60 cm	
80 x 60 x 60 cm	
100 x 60 x 60 cm	

45 x 45 x 45 cm	SQUARELINE BOX
60 x 30 x 60 cm	

60 x 60 x 60 cm	SL BOX WITH RESERVOIR
80 x 45 x 45 cm	
100 x 45 x 45 cm	
80 x 60 x 60 cm	
100 x 60 x 60 cm	



CUSTOM LINE

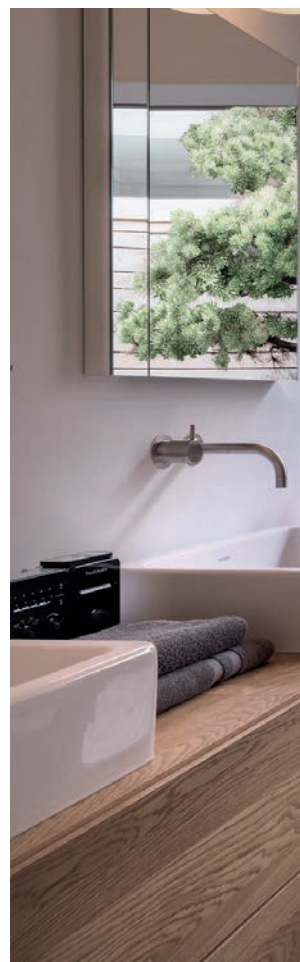
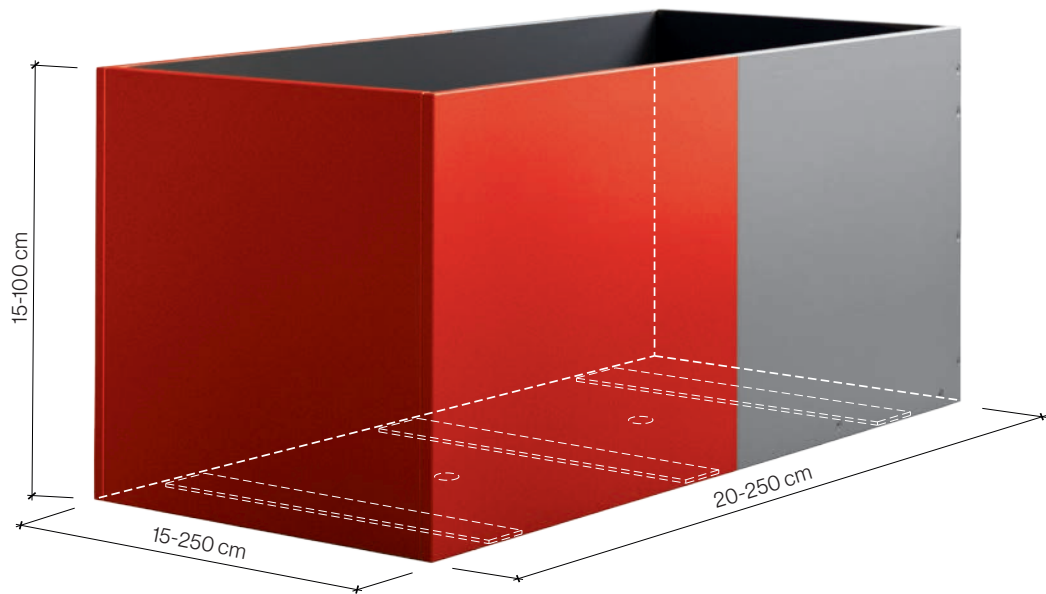
Where the eye meets
nature, there begins
a highly imaginative
journey to the
innermost self.

CUSTOM LINE



Custom Line. Flexible. Tailor-made.

For singular spatial conditions and new ideas. Appropriate and individual garden design brings our surroundings to full bloom. Design employing the Swisspearl Custom Line means perfectly dimensioned plant containers with lengths of up to 250 cm. The containers are specially designed and manufactured according to personal requests.



Design freedom. Custom-made.

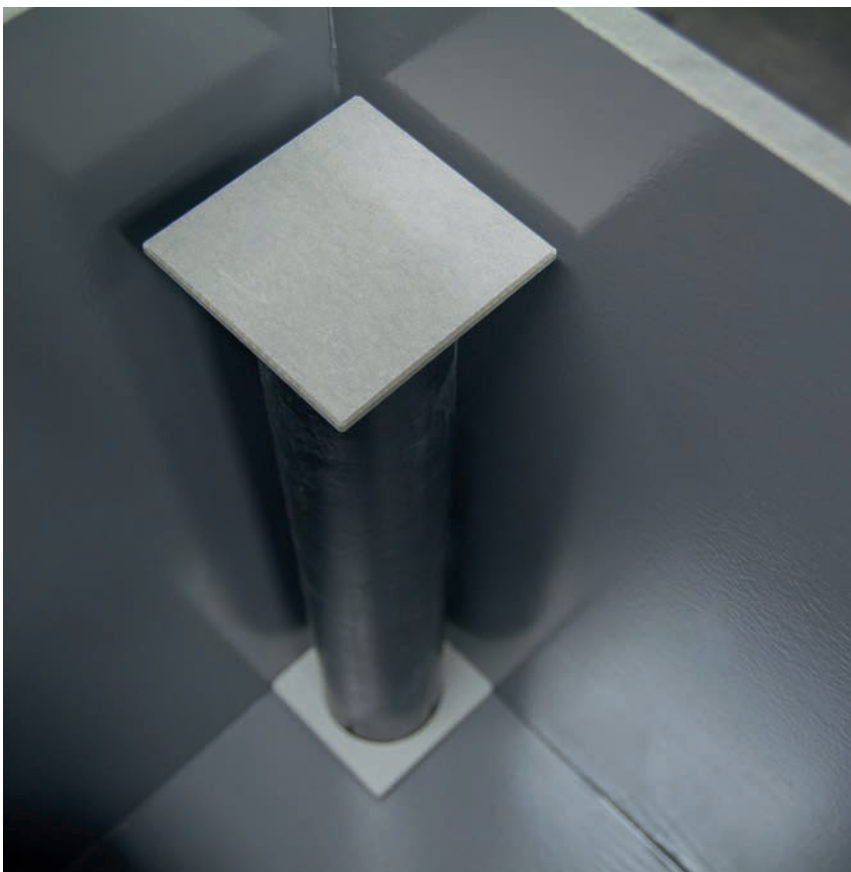
Panels are used to create both large and small plant containers that serve as privacy screens, room dividers, garden or terrace decoration, and offer an invitation to enjoy the comforts of home. The impermeable inner coating and frost protection ensure long-term pleasure with both plants and the container. Moreover, the design can include sharp edges, rounded corners, bonding, or invisible screws just as one pleases.



Design of the first water.
Water control and outflow
take place via integrated base
perforations. An optional water
reservoir is also no problem and
provides the watering of bushes
and flowers with ideal support.

Custom Line / Design: Swisspearl







CUSTOM COLOR



Colourful splendour in combination with grey, or green leaves with red. Select your chosen design from the special Swisspearl color range, or an extensive palette of the most attractive RAL and NCS shades, which are available for virtually all Swisspearl plant containers.

CUSTOM COLOR



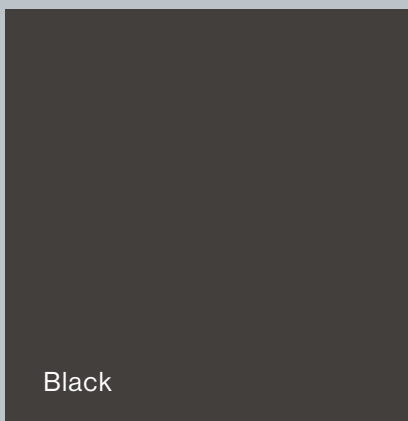
THE NEW COLORS – EXPRESSION LINE

Genuine naturalness.

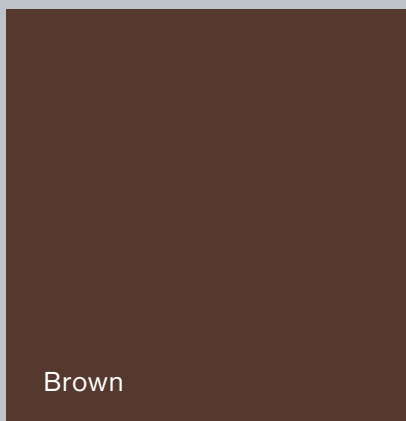
From 2019 onwards, our highly popular Geisha, Kyoto, Osaka, Ronco, Samurai, Sumo, Sushi and Tokyo plant containers will come in five elegant colors and with two differing surfaces. You can choose between a smooth glaze, the depth effect of which accentuates the typical Swisspearl structure, or a matt version with the rough tactility of the natural material. However, irrespective of your choice of finish, thanks to the unobtrusive coloring, the fresh green of your plants will always be shown to maximum advantage.



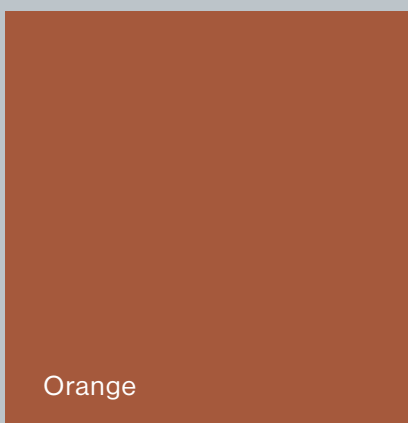
White



Black



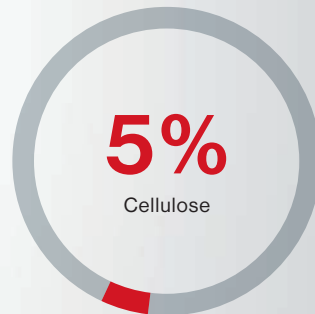
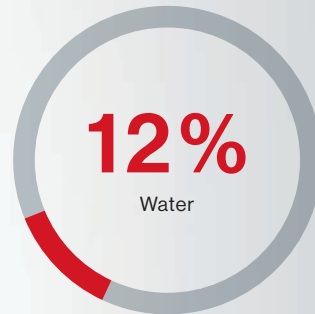
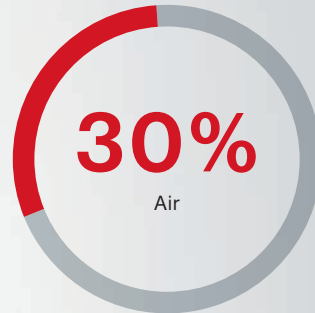
Brown



Orange



Grey



THE MATERIAL

From nature for nature.
The ideal material
for green oases.

THE MATERIAL

Swisspearl. Durability and longevity in every fibre.

The original. Entirely recyclable and made from a special blend of cement, cellulose, fibres, air and water that defines fibre cement. A highly resilient material with cornerstones formed by a pronounced innovative spirit and natural, regional raw materials, which in unison, create trendsetting architecture.

GARDENING TIPS

Watering.

Fibre cement is a breathable product that regulates moisture levels automatically. All the containers possess base outflow perforations, which in order to allow water to flow freely and prevent freezing in winter should not be blocked. Clay fragments are a proven and simple help in this regard, and need merely to be placed over the outflow apertures. Some large containers are also fitted with a water reservoir and overflow, which reduce watering frequency considerably.

Perfect layering.

In order to prevent waterlogging, first fill one-third of the container with expanded clay, or coarse river gravel. Then add a water-permeable nonwoven mat on which the plants are subsequently placed. Finally, fill the container with earth. Keep a roughly 5 cm rim free in order to avoid overflows when watering.

The ideal location.

Select a suitable location for each plant with the correct light and temperature conditions and stand the container on an even surface. Ideally, indoor plant containers should be placed on a underlay or plate to prevent damage to the flooring.

Repotting.

Plants need fresh earth every couple of years and ideally repotting should take place in spring. Take the plant with its roots out of the container, remove the old soil and refill with fresh earth.

Frost protection.

The high end volume of the containers safeguards the roots of the plants against frost. Should you wish to additionally protect the containers in winter, use a nonwoven fabric or natural material, but never plastic, as this can lead to the formation of permanent white discolourations.

Johann Wolfgang von Goethe
Flowers are the beautiful words and
hieroglyphics of nature, with which
she indicates how much she loves us.



Aladin / Design: Patrick Schöni

PRODUCTION

PRODUCTION

Manufactured by hand. The wet fibre cement is moulded into shape. Then following drying, resource-protective processes are used to create frost-proof objects, each of which is unique. Indeed, every Swisspearl product delivers an exemplary environmental balance, lasts for generations and provides a reminder of the inventive spirit of the original.



A photograph of three small green seedlings with two leaves each, growing out of dark, rich soil. The seedlings are positioned in a triangular arrangement. The background is a soft, out-of-focus green, suggesting a natural environment. The text "The End." is written in a red, serif font, centered horizontally and slightly above the middle of the image.

The End.

