

TRESPA®

Cities never stand still. Every hour they look different, following their natural rhythm of days and nights as well as the course of the seasons. As the city grows, new houses, hotels, office buildings and schools arise, others are amplified or renovated to fit the needs of the future.

Welcome to Trespa View of the City. Through this innovative concept, Trespa presents its renewed Trespa® Meteon® and Trespa Pura NFC® portfolio in an elegant play of lights, angles and perspectives, while highlighting the company's core values.

TRESPA TRIGGERS
YOUR IMAGINATION
BY INTRODUCING

**BRAND NEW &
UNIQUE DECORS**





TIMELESS ELEGANCE

The Trespa® Meteon® collection has been enriched with brand new, unique decors in the Focus, Lumen, Naturals and Wood series, clearing the way for boundless creativity and endless design possibilities.

Launched in 2017, the Trespa® Meteon® Focus product line, initially with the two decor sets Santiago and Brooklyn, immediately was embraced by the market. Now it has been extended with three new decors: Chester, Bilbao and Tribeca. Intriguing patterns, enriched with delightful details – from far away they could seem unicolour, but take a closer look and a world of particulars will appear.

The Trespa® Meteon® Focus collection is all about traces and compositions. We found inspiration not only in nature, but also in traditional craftsmanship, such as stoneworking in all its forms, and combined it with our technology to develop aesthetically pleasing and durable façade materials. They are a **virtual mix of technology and creative workmanship, of traces left by human and nature, of abstract and concrete details**. That is why we call them 'hybrid'. ►

In prehistory, men started to work stone in order to adapt it to all kinds of purposes. Not only it was used for making weapons and utensils, stone also was the canvas on which they could tell their stories. By incising series of images, they transmitted their knowledge and art from one generation to another.

With its design of parallel lines in multiple directions, the **Chester** decors seem to bear traces of natural rock abrasion, but also remind of traditional ways of stone working, used by men to obtain decorative effects. Chester is available in Grey, Cement and Anthracite.

Decor set **Tribeca** shows an almost 'pixeled' composition, a sequence of geometric elements, such as in a brick wall. The design represents a modern interpretation of Venetian plaster, a traditional wall and ceiling decoration technique where plaster mixed with marble dust is applied with a trowel in multiple, thin layers to obtain an illusion of depth and texture. Tribeca is available in Gold, Bronze, Zinc and Iron.

Decor set **Bilbao** completes the Focus collection and has a geometric grid pattern, a 'textile' structure, which is a typical element from the world of architecture, construction and design. Think of reinforced concrete for example, or canvas used for painting. The twist is that this decor represents something that usually remains hidden, and brings to the foreground what normally is not visible to the eye. Bilbao is available in Tierra, Sombra and Selva.

"All designs are developed so that **the eye cannot identify any repetition pattern**", says Ursenna Velardi, Development Engineer at Trespa. "We know that this is a very important aspect for our customers and therefore we ensure repetition of the design is not visible". ▶



TRESPA® METEON® LUMEN Iceland Grey | 1971, Specular, Diffuse, Oblique





TRESPA® METEON® WOOD DECORS Tropical IPE NW30, **TRESPA PURA NFC®** Tropical IPE PU30



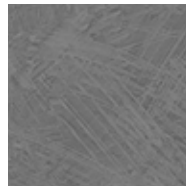
Cladding panels for innovative and functional ventilated façade systems, balconies and sunblind solutions.



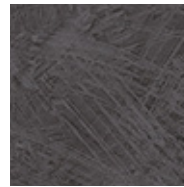
DISCOVER THE COMPLETE
TRESPA® METEON®
COLLECTION ON
TRESPA.COM

FOCUS

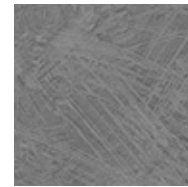
TO EXPERIENCE THE EFFECT OF THE FOCUS DECORS
AND FINISHES, WE ADVISE TO ORDER SAMPLES.



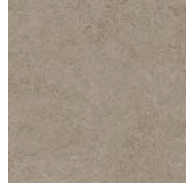
C01.21
Chester Grey



C01.25
Chester Anthracite



C01.70
Chester Cement



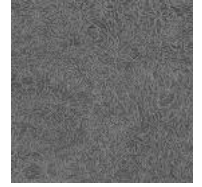
CM03.06
Tribeca Gold



CM03.10
Tribeca Bronze



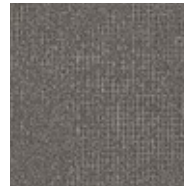
CM03.16
Tribeca Iron



CM03.24
Tribeca Zinc



C06.24
Bilbao Selva



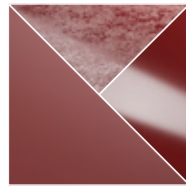
C06.21
Bilbao Tierra



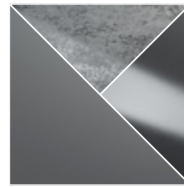
C06.25
Bilbao Sombra

LUMEN

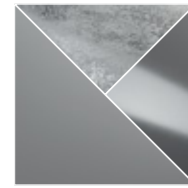
TO EXPERIENCE THE EFFECT OF THE LUMEN FINISHES,
WE ADVISE TO ORDER SAMPLES.



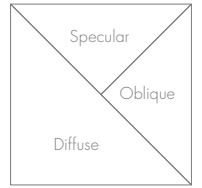
L1245
California Red



L1971
Iceland Grey



L7000
Alabama Grey



UNI COLOURS



A12.4.5
East Red



A19.7.1
Charcoal Grey



A70.0.0
Slate Grey

NATURALS

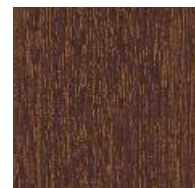


NA18
Natural Slate



NA19
Italian Slate

WOOD DECORS



NW30
Tropical Ipe

NOTE

PLEASE BE AWARE THAT NOT ALL PRODUCT-FINISH COMBINATIONS ARE POSSIBLE. FOR AVAILABLE SHEET SIZES, THICKNESSES AND FINISHES IN YOUR COUNTRY, PLEASE CHECK **TRESPA.INFO** FOR THE DETAILED AND UP TO DATE DELIVERY PROGRAMME AND MATERIAL PROPERTY DATASHEET. ALTERNATIVELY YOU CAN USE THE PRODUCT SELECTOR ON **TRESPA.COM** (AFTER CHOOSING THE COUNTRY WHERE THE PROJECT IS LOCATED).

FOCUS

Colour code	Colour name	Diffuse	
		■	■
C01.21	Chester Grey	■	■
C01.25	Chester Anthracite	■	■
C01.70	Chester Cement	■	■
C06.24	Bilbao Selva	■	■
With metallic effect			
CM06.21	Bilbao Tierra	■	■
CM06.25	Bilbao Sombra	■	■
CM03.06	Tribeca Gold	■	■
CM03.10	Tribeca Bronze	■	■
CM03.16	Tribeca Iron	■	■
CM03.24	Tribeca Zinc	■	■

TRESPA® METEON® FOCUS PANELS FEATURE A DIRECTIONAL COLOURED SURFACE.

LUMEN

Colour code	Colour name	Diffuse			Oblique			Specular		
		■	■	■	■	■	■	■	■	■
L1245	California Red	■	■	■	■	■	■	■	■	■
L1971	Iceland Grey	■	■	■	■	■	■	■	■	■
L7000	Alabama Grey	■	■	■	■	■	■	■	■	■

TRESPA® METEON® LUMEN DIFFUSE, LUMEN OBLIQUE AND ALL LUMEN WITH METALLIC EFFECT (PRODUCTS WITH LM CODE) FEATURE A DIRECTIONAL COLOURED SURFACE.

UNI COLOURS

Colour code	Colour name	Satin				Rock*			
		■	■	■	■	■	■	■	■
A12.4.5	East Red	■	■	■	■	■	■	■	■
A19.7.1	Charcoal Grey	■	■	■	■	■	■	■	■
A70.0.0	Slate Grey	■	■	■	■	■	■	■	■

NATURALS

Colour code	Colour name	Matt				Matt-Rock*	
		■	■	■	■	■	■
NA18	Natural Slate	■	■	■	■	■	■
NA19	Italian Slate	■	■	■	■	■	■

TRESPA® METEON® NATURALS PANELS FEATURE A DIRECTIONAL COLOURED SURFACE.

WOOD DECORS

Colour code	Colour name	Matt			
		■	■	■	■
NW30	Tropical Ipe	■	■	■	■

TRESPA® METEON® WOOD DECORS PANELS FEATURE A DIRECTIONAL COLOURED SURFACE. THE GRAIN OF TRESPA® METEON® WOOD DECORS RUNS THE LENGTH DIRECTION OF THE PANEL.

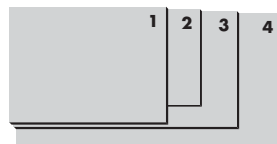
TYPES

- **SINGLE SIDED DECORATIVE** DECORATIVE SIDE WITH NON DECORATIVE BLACK REVERSE
- **DOUBLE SIDED DECORATIVE** SAME COLOUR FOR FRONT AND REVERSE SIDE OF THE PANEL
- **VARITOP** DECORATIVE SIDE WITH STANDARD WHITE DECORATIVE SATIN REVERSE (A03.0.0)
- **DUOCOLOUR** DIFFERENT COLOUR FOR FRONT AND REVERSE SIDE OF THE PANEL

THICKNESSES

- 6 mm (≈ 1/4 inch)
- 8 mm (≈ 5/16 inch)
- 10 mm (≈ 3/8 inch)
- 13 mm (≈ 1/2 inch)

SIZES



- 1 2550 x 1860 mm (≈ 100 x 73 inch)
- 2 3050 x 1530 mm (≈ 120 x 60 inch)
- 3 3650 x 1860 mm (≈ 143 x 73 inch)
- 4 4270 x 2130 mm (≈ 168 x 83 inch)*

*THE LARGE SIZE OF THIS PANEL ALLOWS AN EFFICIENT MACHINING OF THE PRODUCT.

TRESPA PURA NFC®

Versatile siding system consisting of planks, fasteners and matching accessories.



PU30

Tropical Ipe

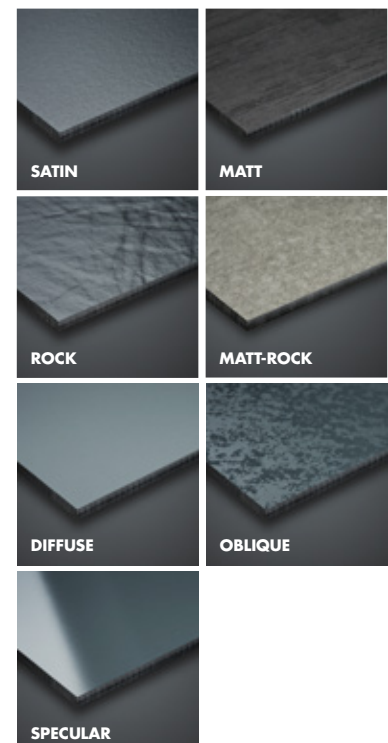
COLOUR CODE	COLOUR NAME	CORE	FINISH	FLUSH
		BROWN	MATT	
PU30	Tropical Ipe	•	•	•

SIZE	3050 x 186 mm
THICKNESS	8 mm
PLANK (GROSS)	0,57 m ²
PLANK (NET)	0,55 m ²
1 PALLET	36 Packs / 144 sidings
1 PACK	4 Sidings



DISCOVER THE COMPLETE
TRESPA PURA NFC®
COLLECTION ON
TRESPA.COM

FINISHES





“A CITY IS NOT
A STATIC PLACE,
BUT A SOURCE
OF INSPIRATION,
SURPRISES AND
EXPERIENCES”

" TRESPA® ME
LUMEN: PLA
COMPOSITI
LIGHT REFLE
YOUR FAÇA
A SINGLE C

TRESPA® METEON® LUMEN Alabama Grey L7000, Specular, Diffuse, Oblique



TRESPA® METEON® FOCUS Bilbao Selva C06.24, Bilbao Tierra CM06.21, Bilbao Sombra CM06.25



LIGHT EFFECTS

The Tribeca decors are provided with an original metallic effect. “Of course, we already offer a large variety of decors with metallic effects; our extensive portfolio includes tones of gold, white, blue, grey et cetera. But this is the first time that we use this specific pigment, which gives Tribeca its **cool pearled effect**.” In the Tribeca decors, the metallic layer is more on the surface, to maximise the game of light reflection. Bilbao Sombra and Tierra, on the other hand, have a hint of a metallic sparkle in the base layer to create an urban, industrial look.

All Trespa® Meteon® Focus decors come in extremely matt Diffuse finish only. “**Diffuse finish works very well for the Focus decors because it further enhances their aesthetic qualities**”, Velardi explains. “Dark, matt tones are also an important architecture trend.”

ENDLESS COMBINATIONS

The Meteon® Lumen collection has been enriched with Iceland Grey, Alabama Grey and California Red. Lumen was introduced to **bring façades to life by playing with light effects** and thus creating the right atmosphere for every building. Light can be used in a creative way just by reflecting, breaking, amplifying or attenuating it, and this is exactly what Lumen does with its three different finishes Diffuse, Oblique and Specular. Diffuse has a low light reflectivity and removes glossiness and texture, giving the façade a smooth, subdued matt appearance. Oblique, with its pleasantly uneven matt and gloss surface, creates a natural, weathered look, while Specular adds a glossy liveliness by reflecting its surroundings. ►

The same tones, two greys and a warm red, were added to the Uni Colour range in order to increase combinability even more. Also the Focus collection lends itself very well to creative combinations with Lumen or Uni Colours.

Other newcomers to the Trespa® Meteon® collection include two variants in the Naturals product line: **Italian Slate** and **Natural Slate**, inspired on this fine-grained and foliated rock. The Woods collection was extended with **Tropical Ipe**. To make it easier to bring the unrivaled beauty of ipe hardwoods also to homes and light commercial buildings, Trespa added this decor to its Trespa Pura NFC® siding line as well.

NEW COLOURS, SAME DURABILITY

Trespa® Meteon® panels perform exceptionally well outdoors and have an excellent weather resistance. Sun and rain have no significant effect on the panel's surface and the product is highly scratch and impact resistant. Its closed surface withstands dirt accumulation, making it easy to clean and to maintain. In order to guarantee our **high quality standards**, every decor has been tested individually. These characteristics make them highly durable: Façades with Trespa® cladding will look great for many years. ■

TRESPA® METEON® LUMEN California Red 11245, Specular, Diffuse, Oblique





**Trespa
Second
Life™**

EXTENDING LONGEVITY
WITH TRESPA SECOND LIFE

Sustainability became key part of Trespa's strategy in 2010. Over the years, Trespa has put a lot of effort into monitoring and improving our environmental performance and implemented a number of projects and activities. Trespa now launches Trespa Second Life, where façade panels after their service time - instead of being disposed - can be reused for outdoor furniture and many other applications.

Creating a **high-quality, durable product** is the core element of Trespa's sustainability policy. The longer a product lasts, the longer the period of time to spread the environmental impact associated with the production of those raw materials and the environmental costs that incurred in the product's manufacturing, such as energy, waste, and emissions. Furthermore, by implying fewer replacements, long-lasting products entail less use of resources, lower emissions of pollutants and a smaller amount of waste than short life-span goods, even when their production turns out to be more resource and energy-intensive. We can proudly say that the reference service life for Trespa® Meteon® panels is set at 50 years.

TRESPA SECOND LIFE

Whether a building is demolished or a façade is replaced for aesthetical reasons, Trespa's high-quality panels keep their functionality long after their service life on buildings has come to an end. Therefore we decided to create Trespa Second Life, a program for reuse of our panels; our next step towards a completely circular product. **Reusing a product means extending its lifetime and keeping it within the economy, with minimal extra energy consumption and CO₂ generation.** As the panels are to be reused as they are, they will only have to be cut and cleaned. Recycling, where waste materials are converted into new materials or objects, is more energy-intensive.

With Trespa Second Life, owners of buildings with Trespa® façade cladding have the option to buy a guarantee from Trespa. Panels covered by this guarantee will be taken back to Trespa, where they will be prepared for new applications. Instead of disposing them, there is a wide range of possibilities to give them a second life: they could be used for example for **outdoor furniture and for many other applications.** In this way, the burden of disposing the material will not be in the hands of building owners anymore.

We are open to any suggestions on possible applications of the Trespa Second Life panels. Of course, it is important to avoid downcycling and loss of product value. That is why we prioritize applications in which the material is not overqualified. Our final objective is to go beyond the current lifetime of the material and to create a second life where the material is fully exploited. If we increase the life of the product by one half, we will have a reduction of one third of the product's total current environmental impact. ■



Before



After



TRESPA.COM



**DISCOVER
THE VIDEO**

SCAN AND BE AMAZED

U5505-432007



TRE|SPA®