

CONTACT US

TRESPA INTERNATIONAL B.V.
P.O. Box 110, 6000 AC Weert
Wetering 20, 6002 SM Weert
The Netherlands
www.trespa.com

**CUSTOMER SERVICE DESK
EMEA EXPORT**
Tel: +31 (0) 495 458 359
Fax: +31 (0) 495 458 383
Info.Export@Trespa.com

TRESPA UK LTD.
35 Calthorpe Road
Edgbaston
Birmingham, B15 1TS
United Kingdom
Tel: 0808-2340268
Fax: 0808-2341377
Info.UK@Trespa.com

TRESPA NORTH AMERICA LTD.
62 Greene Street (Ground Floor)
New York, NY 10012
United States of America
Tel: +1 800 487 3772
Fax: +1 866 298 3499
Info.NorthAmerica@Trespa.com

TRESPA CHINA CO. LTD.
Room 2604-05, HuaiHai Plaza
No. 1045 HuaiHai Road (central)
ShangHai 200031
P.R. China
Tel: +86 (0) 21 6288 1299
Fax: +86 (0) 21 6288 1296
Info.China@Trespa.com

**CUSTOMER SERVICE DESK
ASIA/PACIFIC**
Tel: +86 (0) 21 5465 8388
Fax: +86 (0) 21 5465 6989
Info.APAC@Trespa.com

VISIT US

**TRESPA DESIGN CENTRE
NEW YORK**
62 Greene Street (Ground Floor)
New York, NY 10012
United States of America
Tel: +1 212 334 6888
Fax: +1 866 298 3499
TDC.NewYork@Trespa.com
www.trespa.com/tdc

**TRESPA DESIGN CENTRE
WEERT**
Wetering 20
6002 SM Weert
The Netherlands
Tel: +31 (0) 495 458 845
TDC.Weert@Trespa.com
www.trespa.com/tdc

**TRESPA DESIGN CENTRE
BARCELONA**
Calle Ribera 5,
08003 Barcelona
Spain
Tel: +34 (0) 93 295 4193
Fax: +34 (0) 93 116 3300
TDC.Barcelona@Trespa.com
www.trespa.com/tdc

**TRESPA DESIGN CENTRE
SANTIAGO**
Eliodoro Yáñez 2831
Torre A - Local 1
Providencia, Santiago
Chile
Tel: +56 2 4069990
TDC.Santiago@Trespa.com
www.trespa.com/tdc

FOLLOW US



DISCLAIMER

The disclaimer that follows is a summary of the applicable full disclaimer (which can be found on www.trespa.com). The information provided by Trespa International B.V. ("Trespa") in this document is solely indicative. Trespa is unable to warrant the accuracy and completeness of this information. No rights can be derived from the information provided; the use of the information is at the other party's risk and responsibility. This document does not guarantee any properties of Trespa's products. Trespa does not warrant that the information in this document is suitable for the purpose for which it is consulted by the other party.

The document does not contain any design, structural calculation, estimate or other warranty or representation that customers and third parties may rely on. Colours used in Trespa's communications (including but not limited to printed matter) and in samples of Trespa's products may differ from the colours of the Trespa's products to be supplied. Trespa's products and samples are produced within the specified colour tolerances and the colours (of production batches) may differ, even if the same colour is used. The viewing angle also influences the colour perception. Customers and third parties must have a professional adviser inform them about (the suitability of) the

Trespa's products for all desired applications and about applicable laws and regulations. Trespa reserves the right to change (the specifications for) its products without prior notice.

To the maximum extent permitted under the applicable law, Trespa is not liable (neither contractual nor non-contractual) for any damage arising from or related to the use of this document, except if and to the extent that such damage is the result of wilful misconduct or gross negligence on the part of Trespa and/or its management. All oral and written statements, offers, quotations, sales, supplies, deliveries and/or agreements and all related activities of Trespa are

governed by the Trespa General Terms and Conditions of Sale (*Algemene verkoopvoorwaarden Trespa International B.V.*). All oral and written statements, offers, quotations, sales, supplies, deliveries and/or agreements and all related work of Trespa North America, Ltd. are governed by the Trespa General Terms and Conditions of Sale, which can be found on and downloaded from the Trespa website, www.trespa.com/documentation.

All intellectual property rights and other rights regarding the content of this document (including logos, text and photographs) are owned by Trespa and/or its licensors.

TRESPA® METEON® | EXTERIOR

TRESPA® METEON® AVAILABLE WITH PEFC™ OR FSC™ CERTIFICATION



The mark of responsible forestry



VISIT TRESPA.COM FOR THE MOST UP TO DATE VERSION OF THIS DOCUMENT.

TRESPA®

Think Trespa

TRESPA®

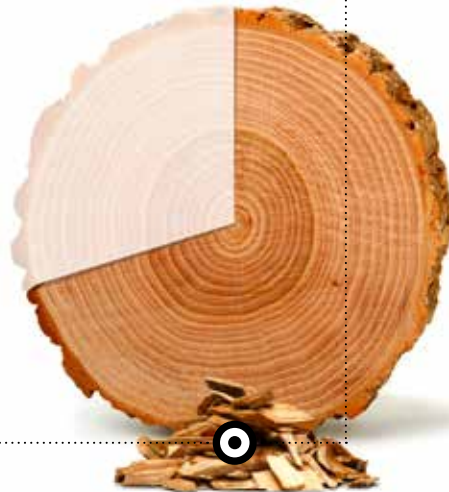
USING RENEWABLE RESOURCES

ASK FOR
CERTIFIED PRODUCTS

THE ENTIRE TRESPA® METEON® PRODUCT RANGE IS NOW AVAILABLE WITH PEFC™ OR FSC™ CERTIFICATIONS UPON REQUEST. THESE CERTIFICATIONS ARE ONE OF THE INITIATIVES RESULTING FROM TRESPA'S SUSTAINABILITY POLICY, BY WHICH TRESPA SHOWS ITS COMMITMENT TO THE USE OF RAW MATERIALS FROM SUSTAINABLE ORIGIN AND TO FOREST PRESERVATION.

70% WOOD-BASED FIBRES

Wood is a natural renewable resource which takes up CO₂ from the atmosphere around us. Trespa® Meteon® products contain up to 70% of natural fibres, most of which originate from managed forests which are recognised by the Programme for the Endorsement of Forest Certification™ (PEFC™) and the Forestry Stewardship Council™ (FSC™). These organisations encourage, among other eco-benefits, that forests are sustainably managed, taking the ecosystem and biodiversity as well as fair labour conditions into consideration.



PEFC™ OR FSC™ CERTIFICATIONS AVAILABLE

The entire Trespa® Meteon® product range—in all types, sizes, thicknesses, finishes and colours—is available with PEFC™ or FSC™ certification upon request, in restricted quantities and jurisdictions. Ask Trespa's Customer Service Desk for PEFC™ or FSC™ certified products.



LONG-LASTING PERFORMANCE

Trespa® Meteon® panels are well-known for their long-lasting performance and reliability. Their closed surface structure practically withstands dirt accumulation, keeping the product smooth and easy to clean. These panels are ideal for prolonged exposure as they retain its appearance for many years. As a result, unnecessary repairing work, time and materials can be minimised.



SUSTAINABLE PROCUREMENT AND BUILDING GUIDELINES

Applying Trespa® Meteon® PEFC™ or FSC™ certified products helps you to qualify for public projects supported by the European Union's Green Public Procurement as well as to obtain credits for the LEED certification developed by the U.S. Green Building Council. The use of PEFC™ or FSC™ certified Trespa® Meteon® panels also contributes to you and your customers' Social Responsibility.

South Essex College Student Accommodation, Southen-on-Sea, United Kingdom